



Stafford Commercial Real Estate

310.360.9900 www.staffordcommercial.com

EXCLUSIVE LISTING AGENTS

**TED STAFFORD
PRESIDENT**

ts@staffordcommercial.com
DRE Lic. 00497103

**STAFFORD COMMERCIAL
REAL ESTATE**

356 N. Robertson Blvd.
West Hollywood, CA 90048
310-360-9900



**657 N. La Peer Drive
West Hollywood, CA 90048**

- Warehouse/Distribution Center & Offices
- Total of 12,450 sq. feet
- Full Subterranean Parking
- Dock High Loading Area
- 1st Floor 6,125 sq. ft., 2nd Floor 6,325 sq. ft.
- Asking Rate: Negotiable

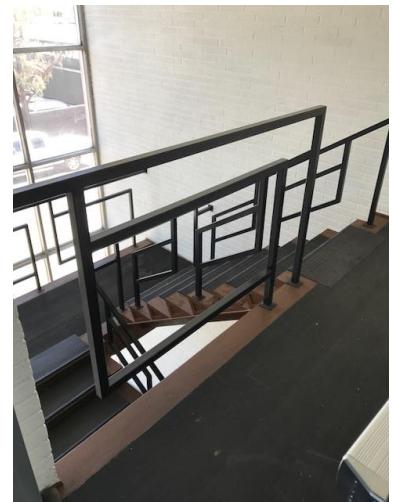
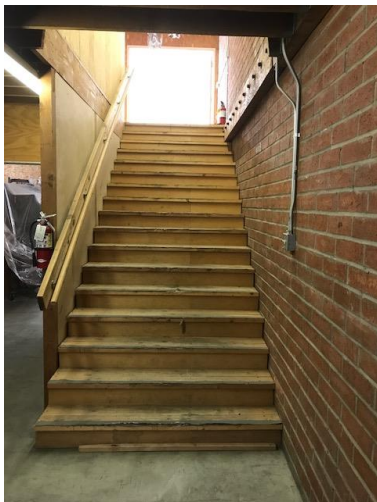
Convenient West Hollywood location near the Santa Monica/Doheny intersection
Immediate occupancy upon completion of successful negotiations

Photos and floor plans following

**For additional information or to arrange to tour the property
please contact Ted Stafford
(310) 360-9900**

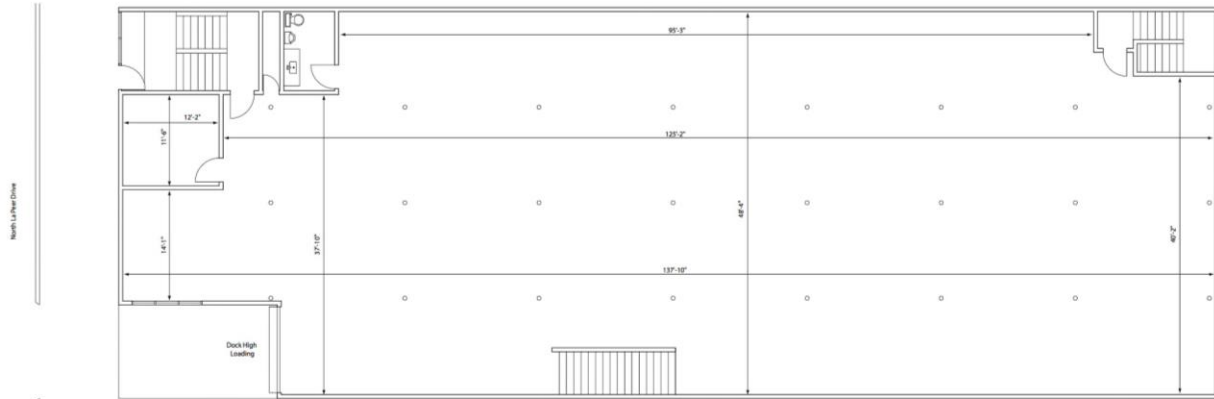
The information contained herein has been furnished for convenience purposes only and should not be entirely relied upon by any prospective lessee/buyer. The broker makes no representation or warranties by the publication of this material and any prospective lessee/buyer is specifically requested to perform his or her own independent investigation. All measurements are approximate and may not prove to be entirely accurate, information may be added or deleted without notice. This information is submitted subject to Seller's right to lease/sell the property or withdraws the property from the market at any time.

**657 N. La Peer Drive
West Hollywood, CA 90048**





STAFFORD COMMERCIAL REAL ESTATE, INC.



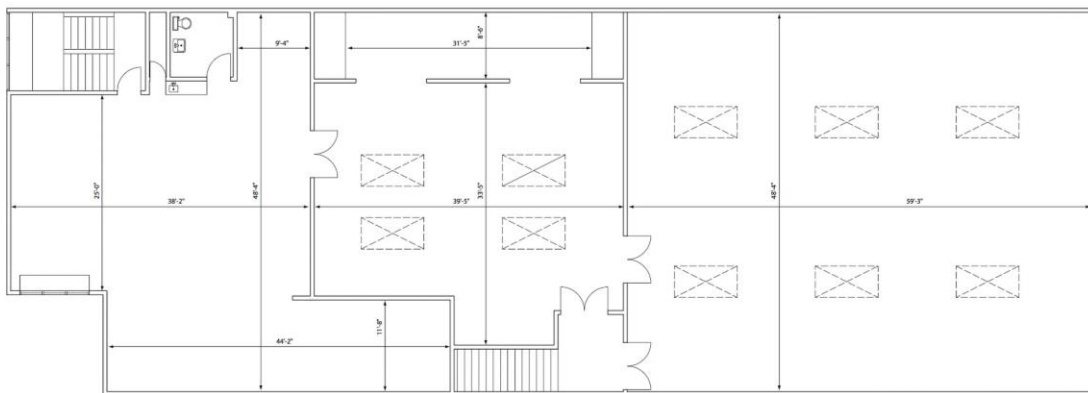
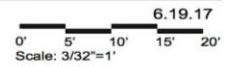
1st Floor = 6,125 SF
 2nd Floor = 6,325 SF
 Total = 12,450 SF

12,450 SF Commercial

1st Floor Plan

Stafford Commercial Real Estate, Inc..

657 North La Peer Drive
 West Hollywood, CA. 90069



1st Floor = 6,125 SF
 2nd Floor = 6,325 SF
 Total = 12,450 SF

12,450 SF Commercial

2nd Floor Plan

Stafford Commercial Real Estate, Inc..

657 North La Peer Drive
 West Hollywood, CA. 90069

